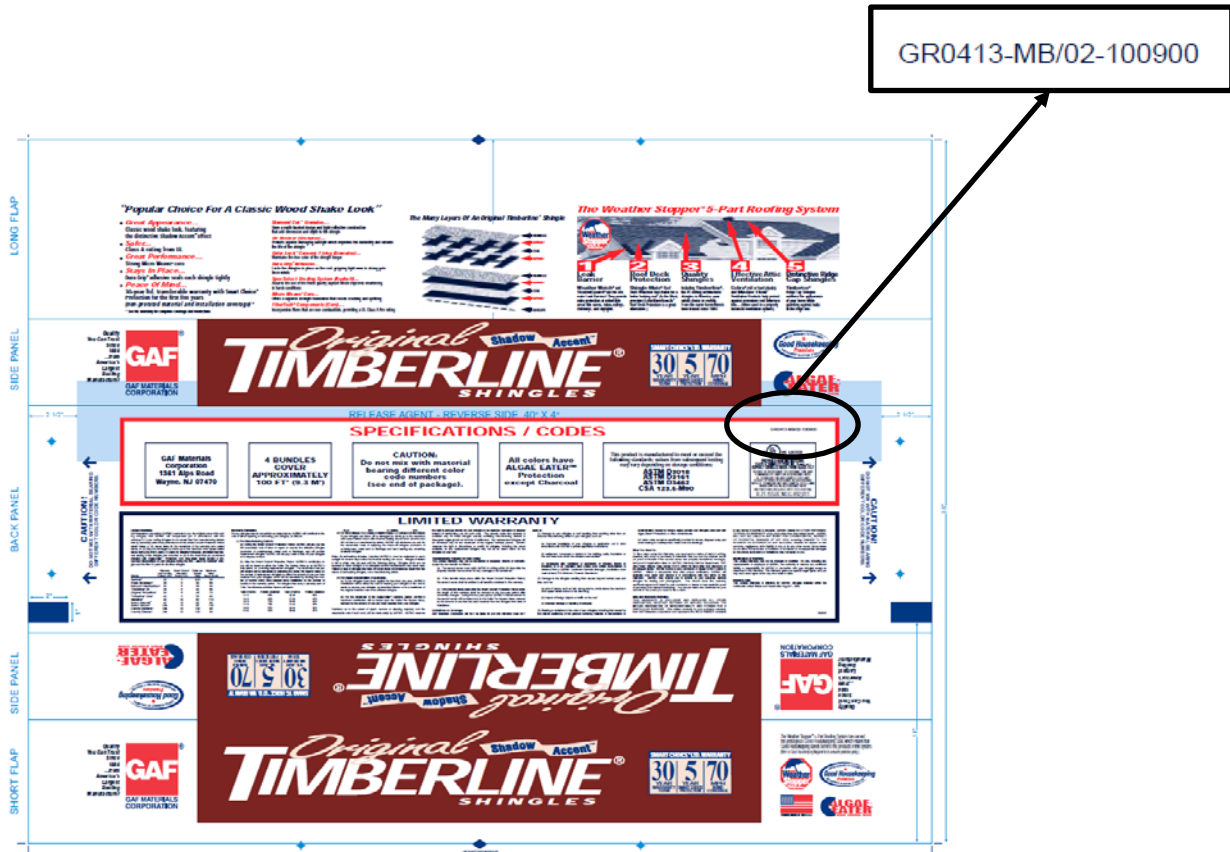


How Can I Determine If My Shingles Were Manufactured in Mobile?

The benefits to which you may be entitled depend on which Settlement Class you are in. In order to determine whether you are in the Mobile Settlement Class, you will need to find out if you have Timberline® Shingles on your roof. If your Timberline® Shingles were not made in Mobile, you may be a member of the Non-Mobile Settlement Class.

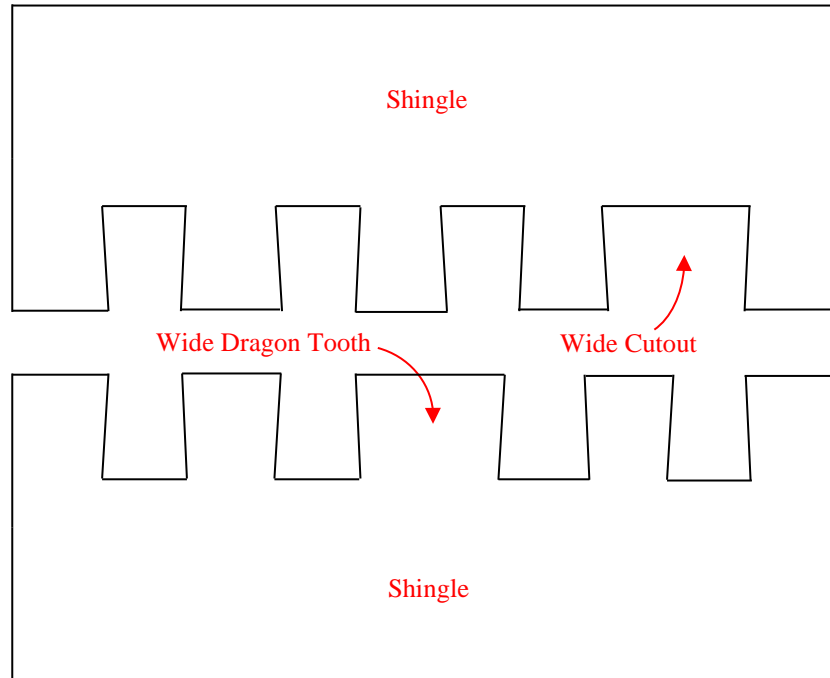
Below are some ways that may help you determine whether your Timberline® Shingles were made in Mobile:

1. If you still have the packaging on a bundle of the Shingles that were installed on your roof, you can look for an alphanumeric code on the packaging. Below is an example of the packaging on a bundle of Timberline® Shingles that shows the location of that alphanumeric code on the packaging. If the letters “MB” appear in the middle of that code as shown in the example below, your shingles were made in Mobile and you may be a member of the Mobile Settlement Class.

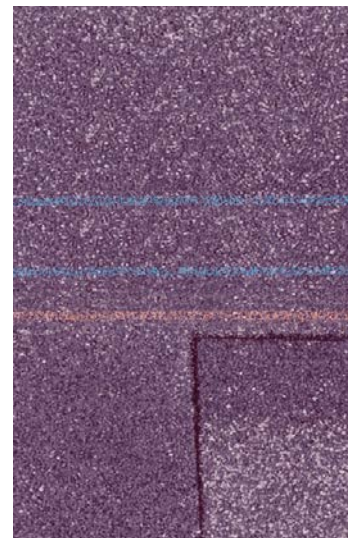


2. There are certain physical markings or codes on some Mobile Timberline[®] Shingles, which you may be able to find by removing a shingle from your roof and examining it. Some of these markings or codes are described below.

A. Timberline[®] Shingles made in Mobile Between January 1999 and April 2005 had a “dragon tooth” pattern of tabs and cutouts, which included either a 7.25 to 7.375-inch wide tab or a 7.25 to 7.375-inch wide cutout. The pictures below show shingles with a dragon tooth pattern (not to scale) containing either the wide tab or the wide cutout.



B. Timberline[®] Shingles made in Mobile between October 2000 and December 2007 were marked with a single orange nail line and sometimes, as shown in the photograph on the right, with two additional blue lines in the “headlap” area of the shingle (*i.e.*, the portion not exposed to the weather). These lines, which marked the zone for nailing, were not unique to shingles made in Mobile. As a result, the presence of a visible orange line does not guarantee that your shingles were made in Mobile.



- C. Some Timberline[®] Shingles made in Mobile between approximately May 17, 2002 and April 2006 were marked with an 8, 9 or 10 digit alphanumeric code starting with the letter “U,” which was printed on the release tape on the back of the shingles.
3. If you previously submitted a warranty claim to GAF for cracked Timberline[®] Shingles, you may have received a letter from GAF stating that you may be part of a class in *Brooks v. GAF Materials Corp.*, which is being settled as part of the Mobile Settlement. If so, GAF has determined that your shingles were made in Mobile and you are likely a member of the Mobile Settlement Class.
 4. You are unlikely to have Mobile Timberline[®] Shingles if your property is located in any of the states listed below or the District of Columbia.

Alaska	Massachusetts	Rhode Island
Colorado	Montana	South Dakota
Connecticut	Nebraska	Utah
Delaware	Nevada	Vermont
District of Columbia	New Hampshire	Washington
Hawaii	North Dakota	West Virginia
Idaho	Oregon	Wyoming
Maine		

If you need help determining whether your Timberline[®] Shingles were made in Mobile, please call the toll-free number, 1-866-759-6518, for assistance. In any event, if you submit a claim, GAF will determine if your Timberline[®] Shingles were manufactured in Mobile or elsewhere.